

—
OLIVINE
—



OLIVINE



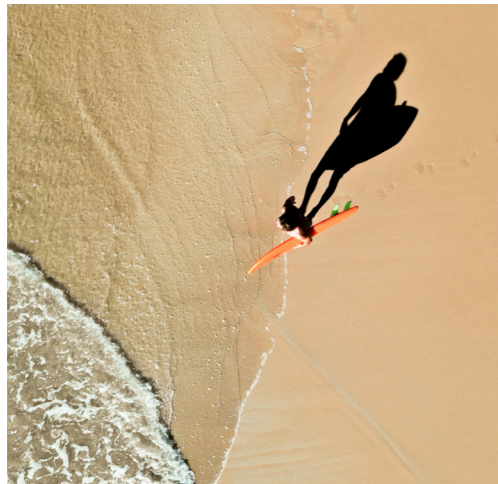
Nestled on the stunning South Coast of New South Wales in Batemans Bay, Olivine is an exclusive collection of 17 meticulously designed apartments where contemporary luxury meets coastal charm. Surrounded by lush landscapes, including a prestigious golf course, a vibrant marina, and pristine beaches, this off-plan development offers a lifestyle like no other.

LIFE IN THE BAY

Embrace the relaxed coastal lifestyle with Catalina Golf Club, Batemans Bay Marina and pristine surf beaches on your doorstep.



4



5





6

7



COASTAL ELEGANCE

EACH RESIDENCE IS THOUGHTFULLY DESIGNED TO BLEND STYLE WITH PRACTICALITY, CREATING THE IDEAL SPACE FOR BOTH RELAXATION AND ENTERTAINING.

The open-plan design invites abundant natural light, enhancing the sense of space and tranquility.

DESIGNED FOR COMFORT, CRAFTED FOR YOU

EXPANSIVE LIVING AREAS ARE PERFECTLY TAILORED FOR EASY LIVING AND EFFORTLESS HOSTING, MAKING EVERY DAY FEEL LIKE A HOLIDAY.

With a layout that promotes seamless flow, large windows bring the outside in, offering a bright and airy atmosphere that reflects the natural beauty of the surrounding environment.



INTERIOR FINISHES AND FEATURES

GENERAL

- Engineered timber flooring to living room, kitchen and hallway
- Wool blend carpet to bedrooms
- Fitted wardrobes to bedrooms
- White paint to walls, ceilings, doors and trims
- Off-form concrete ceiling to living room, (Floors 1-3)
- Ceiling fan with light to living room and bedrooms
- Airconditioning to living room
- Balcony or terrace to all apartments

BATHROOM AND ENSUITE

- Brush nickel tapware and fixtures
- Elegant wall-hung curved edge vanity with drawer
- Mirrored wall cabinet with adjustable glass shelves

KITCHEN

- Engineered timber floors
- Westinghouse appliances
- Seamless joinery with minimal handles
- Solid surface benchtops crafted from natural minerals and acrylic resin

4 BEDROOM APARTMENTS

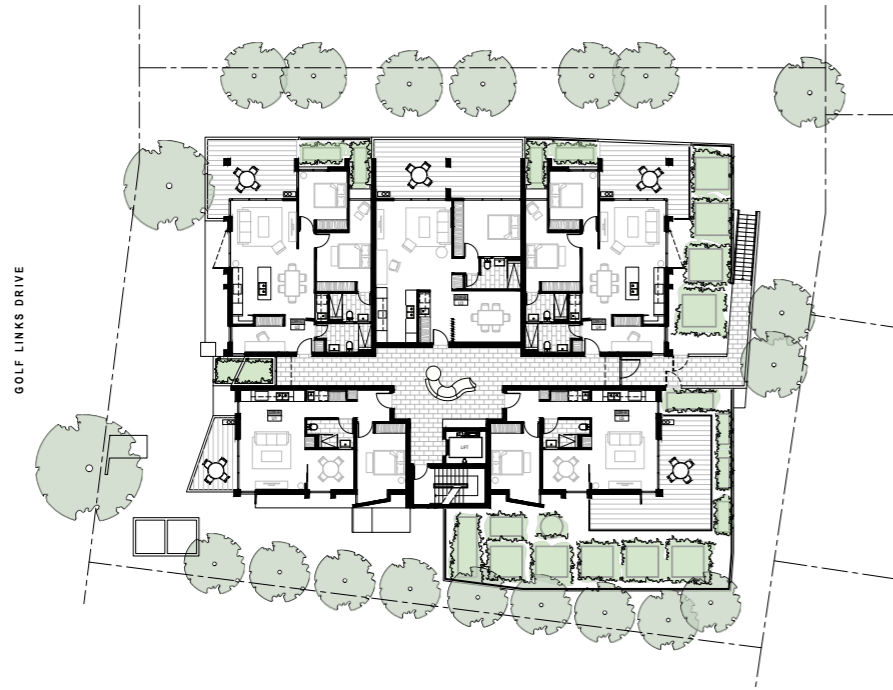
- Freestanding bath in main bathroom
- Brush nickel tapware and fixtures
- Elegant wall-hung curved edge vanity with drawer
- Mirrored wall cabinet with adjustable glass shelves
- Large entertaining balcony

TWO COLOUR SCHEMES

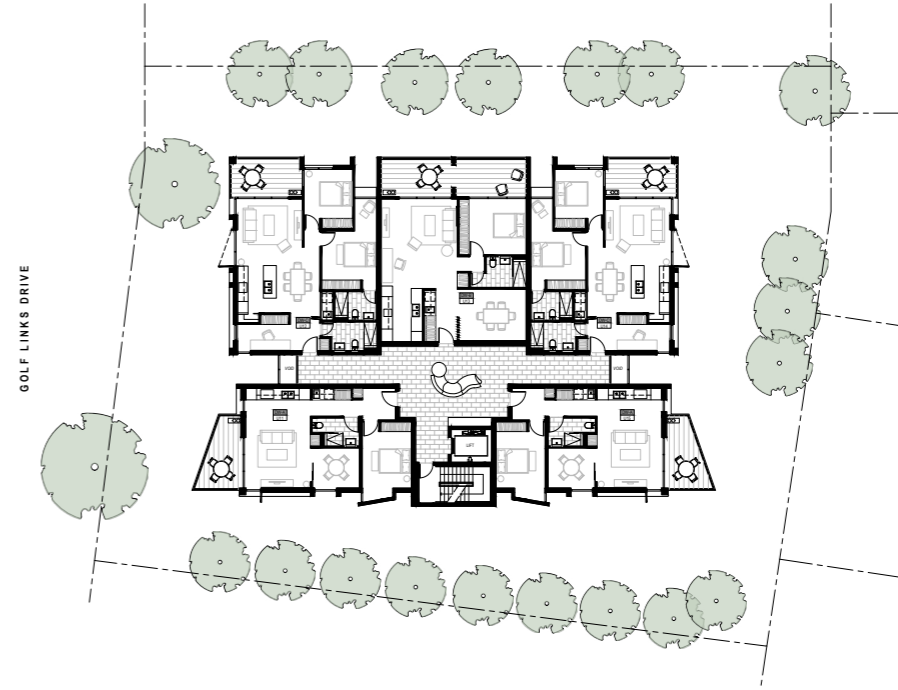
- Warm Scheme
- Cool Scheme



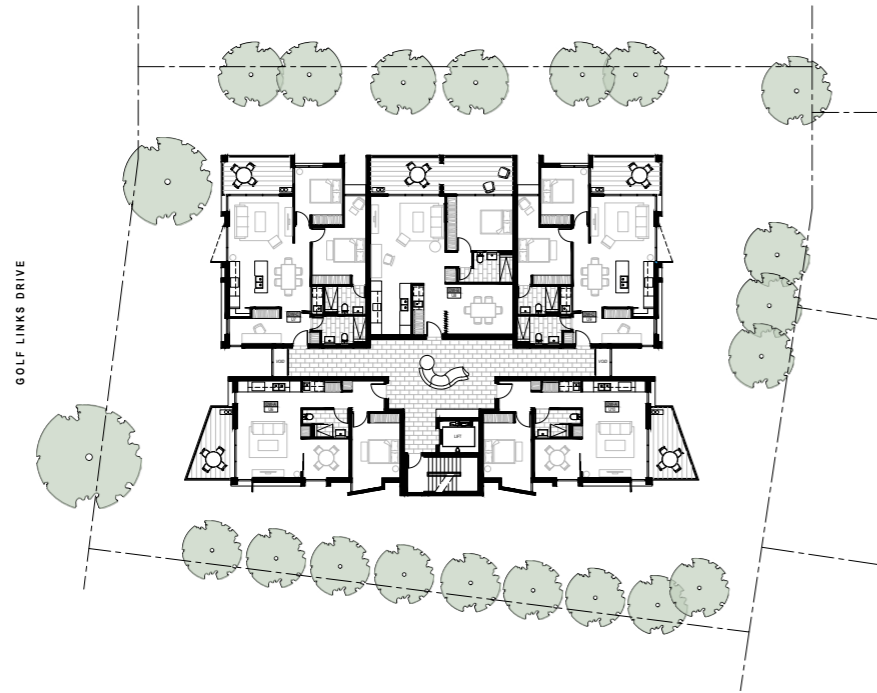
LEVEL ONE



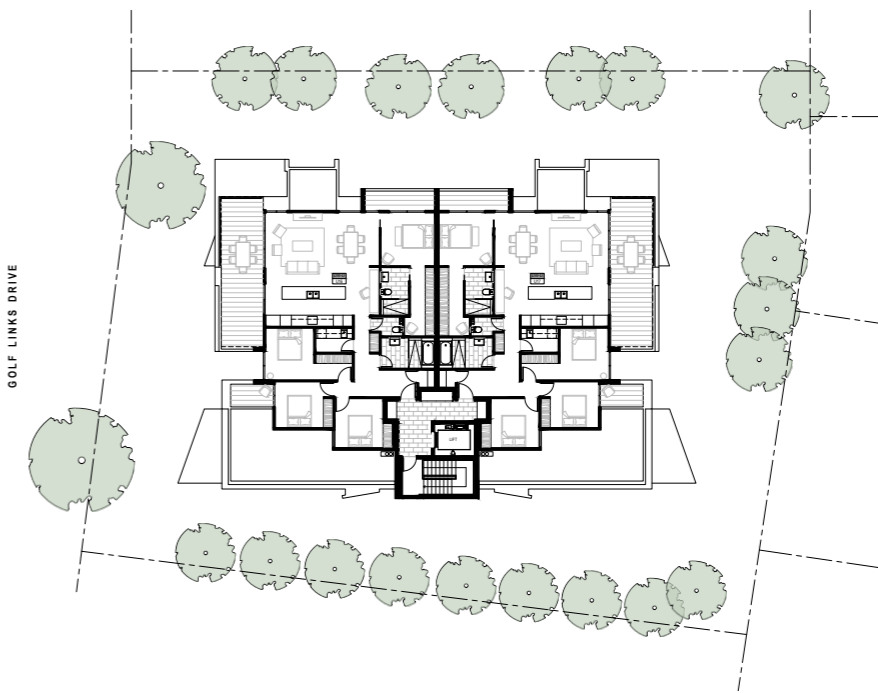
LEVEL THREE



LEVEL TWO



LEVEL FOUR





OLIVINE OFFERS A LIFESTYLE DEFINED BY COMFORT, STYLE AND MODERN COASTAL CHARM.



61 - 63 Golf Links Drive, Golf Links Drive

Batemans Bay

www.liveolivine.com

ENQUIRIES

Blackshaw Coastal | Pat Jameson **m** 0405442905 **e** pjameson@blackshaw.com.au



Information in this sales brochure may differ from material in the contract of sale, disclosure materials or the as constructed development. The images in this brochure are illustrative only, and no promise or guarantee is made or given by the developer or its agents that the information on images will not change. To the extent permitted by law, liability to any recipient of this brochure who acts or makes decisions on the basis of information presented or disclosed in the brochure is excluded. All apartment images shown are renders and are 'artist impressions'. All reasonable care has been taken in the preparation of any floor plans. Unit areas, if shown, are approximate only. The size and layout of units may change. The furniture shown in these drawings represents only the designer's suggested furniture layout, and the items shown are not included in the contract of sale. Any plans shown are a guide only. Whilst all reasonable care has been taken in the preparation of any plan, the developer disclaims all liability should anything depicted on this plan differ from the actual constructed development. Any finishes shown are an indicative guide only and are based on the unit finishes anticipated to be provided at completion of the development. The developer reserves the right to vary the features, colours, models and materials during completion of construction. Whilst every effort has been made to ensure the accuracy of the contents of this document, the developer does not accept any responsibility or liability for any inaccuracies. Plans provided are a guide only and may not be entirely accurate and not necessarily to scale. You must register your details with our sales representative. This information is used for security purposes. We may contact you with respect to this property or others which we believe may interest you. By providing this information you agree to its usage unless you advise us. Other than the circumstances allowed under the Privacy ACT 1988, we do not disclose information of this kind to other parties. All advice given by our sales representative is general advice and has not been prepared taking into account the individual circumstances of the person to whom it is given. All purchasers should seek the advice of an appropriately licensed person as to the suitability of any purchase of property and its suitability to them.